



Diogelu Gwent
Gwent Safeguarding

GWENT SAFEGUARDING
ANNUAL REPORT
2017 – 2018



CONTENTS

INTRODUCTION

LIST OF SAFEGUARDING BOARD MEMBERS

WHAT WE HAVE DONE TO ACHIEVE OUR OUTCOMES

HOW HAVE WE IMPLEMENTED OUR ANNUAL PLAN

WHO WE HAVE WORKED WITH AND WHY

FORMAL REQUESTS FOR INFORMATION

BOARD ACHIEVEMENTS

BOARD MEMBER AND AGENCY CONTRIBUTIONS

USE OF RESOURCES

IDENTIFIED SAFEGUARDING THEMES

PARTICIPATION AND INVOLVING CITIZENS WITH THE WORK OF
THE BOARDS

USE OF ADULT PROTECTION SAFEGUARDING ORDERS

LEARNING AND TRAINING

GUIDANCE, ADVICE AND WORKING WITH THE NATIONAL
INDEPENDENT SAFEGUARDING BOARD

OTHER MATTERS RELEVANT TO OUR WORK

INTRODUCTION

This is the second annual report of the work of the safeguarding Boards in Gwent. It has been compiled to give an updated position of the plans that were produced for the South East Wales Safeguarding Children Board (SEWSCB) and the Gwent-wide Adult Safeguarding Board (GwASB) for 2017-2018.

This report has been produced with involvement of Board and Sub Group members, wider stakeholders and practitioners. The content of the report will cover all fourteen elements as set out in the Social Care Wales, Safeguarding Boards (General) (Wales) Regulations 2015.

The purpose of this report is set out in the Social Services and Well-being (Wales) Act 2014 and the accompanying Welsh Government Guidance - Working Together to Safeguard People Volume 1:

The purpose of annual plans and reports is twofold; it is to be a useful tool of accountability and to be a useful tool for evaluation. In this context accountability has three components. They are:-

Accountability to the public;

Accountability to the statutory agencies from which the safeguarding Boards' partners are drawn;

Accountability to the inspectorate bodies.

We are also working towards achieving our visions:

For SEWSCB

All children and young people in South East Wales are protected from abuse and neglect, live in safe homes and communities and are supported to achieve their full potential.

For GwASB

We protect adults who have care and support needs, and are experiencing or are at risk of, abuse and neglect. We work to prevent further adults across Gwent from becoming at risk of abuse and neglect.

With the above in mind this report will attempt to chart the progress made by both of the Gwent regional safeguarding Boards over the past year, giving a summary of the activity of the groups and work streams that serve to support the strategic safeguarding framework of the area.

We have noted a shift in emphasis of work with our children and young people. This has moved from being regionalised and centred on sexual exploitation to dealing with wider issues of exploitation such as child trafficking and organised crime including County Lines. We have acknowledged this in taking our work forward into 2018 – 2019 and this progression is reflected in our on-going Annual Strategic Plan.



Damien McCann
Chair
SEWSCB



Keith Rutherford
Chair
GwASB

LIST OF MEMBERS OF THE SAFEGUARDING BOARDS

SOUTH EAST WALES SAFEGUARDING CHILDREN BOARD

McCann	Damien	Chair / Director SSD	Blaenau Gwent C.B.C.
Jenkins	Gareth	Vice Chair / Assistant Director Children Services	Caerphilly C.B.C.
Bakewell	Ian	Housing & Communities Manager	Monmouthshire C.C.
Barrett	Nicola	Service Manager Safeguarding	Caerphilly C.B.C.
Berry	Stephen	Board Development Officer	Regional Safeguarding Business Unit
Binding	Diana	Assistant Chief Executive	Community Rehabilitation Company
Bradley	Chris	Service Manager, Children Services	Blaenau Gwent C.B.C.
Brain	Nicola	Detective Superintendent	Gwent Police
Chicken	Sian	Head of Operations	GDAS
Corrister	Diane	Safeguarding Manager	Monmouthshire C.C.
Davies	Deb	Safeguarding Manager	Torfaen C.B.C.
Evans	Liz	Head of Community Housing	Bron Afon Community Housing
Evans	Tanya	Head of Children Services	Blaenau Gwent C.B.C.
Featherstone	Martin	Chief Executive Officer	GAVO
Hamlet	Ann	Safeguarding Lead	A.B.U.H.B.
Harvey	Nikki	Head of Safeguarding	National Probation Service
Haycock	Rebecca	Regional Advisor	VAWDASV
Jenkins	Sally	Head of Children Services	Newport C.C.
Kennedy	Peter	Senior Executive Officer	Torfaen Voluntary Alliance
Manners	Bethan	Senior Solicitor, Legal Services	Caerphilly C.B.C
Marchant	Claire	Chief Officer	Monmouthshire C.C.
Mason	Giles	Governor	H.M.P. Usk
McChrystal	Dermot	Head of Education	Torfaen C.C.
Moon	Marisa	Assistant Director	Barnardos
Naughton	Aideen	Designated Doctor	Public Health Wales
Nicholls	Heather	Head of Gwent	National Probation Service
O'Brien	Jason	Head of Service	SSD Torfaen
Richards	Jacalyn	Service Manager	YOS Monmouthshire & Torfaen
Richards	Kelly	Development Officer	Regional Safeguarding Business Unit
Roach	Mel	Business Manager	Regional Safeguarding Business Unit
Rodgers	Jane	Head of Service Children's	Monmouthshire C.C.
Rogers	Michaela	Service Manager	YOS Caerphilly & Blaenau Gwent
Ryan	Mary	Safeguarding Manager	Newport C.C.
Slater	Lin	Assistant Director Nursing	A.B.U.H.B.
Thomas	Eleri	Deputy Crime Commissioner	Police & Crime Commissioner
Thomas	Liz	Deputy C.E.O.	GAVO

GWENT-WIDE ADULT SAFEGUARDING BOARD

Rutherford	Keith	Chair / Director, SSD	Torfaen C.B.C.
Slater	Lin	Vice Chair /Assistant Director of Nursing	A.B.U.H.B.
Bakewell	Ian	Head of Housing	Monmouthshire C.C.
Barrett	Nicola	Service Manager Safeguarding	Caerphilly C.B.C.
Bartlett	Steve	Older Peoples Commissioner for Wales	
Berry	Stephen	Board Development Officer	Regional Safeguarding Business Unit
Binding	Diana	Assistant Chief Executive	Community Rehabilitation Company
Boothroyd	Julie	Head of Adult Services	Monmouthshire C.C.
Bradley	Chris	Safeguarding Manager	Blaenau Gwent C.B.C.
Brain	Nicola	Detective Superintendent	Head of PPU Gwent Police
Chicken	Sian	Head of Operations	GDAS
Davies	Deborah	Service Manager	Torfaen C.B.C.
Day	Andrew	Service Manager	Blaenau Gwent C.B.C.
Farr	Dr Nigel	G.P.	Public Health Wales
Featherstone	Martin	Chief Executive Officer	GAVO
Galvin	Kay	Head of Education	South Wales Fire Service
George	Louise	H & S C Facilitator	GAVO
Hamlet	Ann	Safeguarding Lead	A.B.U.H.B.
Harris	James	Strategic Director Social Services	Newport C.C.
Harvey	Nikki	Named Professional Safeguarding	Welsh Ambulance Service Trust
Haycock	Rebecca	Regional Advisor	VAWDASV
Hiscocks	Vikki	Head of Active Ageing	Derwen Cymru (part of POBL Group)
Hoskins	Alyson	Head of Adult Services	Blaenau Gwent C.B.C.
Humphrey	Chris	Head of Adult Services	Newport C.C.
Mason	Giles	Governor	H.M.P. Usk
Nicholls	Heather	Head	Gwent LDU, National Probation Service
Pratlett	Gill	Head of Adult Services	Torfaen C.B.C.
Richards	Kelly	Board Development Officer	Regional Safeguarding Business Unit
Roach	Mel	Business Manager	Regional Safeguarding Business Unit
Ryan	Mary	Service Manager for Safeguarding	Newport C.C.
Street	Dave	Director, SSD	Caerphilly C.B.C.
Thomas	Eleri	Deputy Crime Commissioner	Police & Crime Commissioner
Thomas	Liz	Deputy C.E.O.	GAVO
Williams	Jo	Assistant Director, Adults Services	Caerphilly C.B.C.

WHAT WE HAVE DONE TO ACHIEVE OUR OUTCOMES

During the year April 2017 to March 2018, both safeguarding Boards in Gwent were undergoing a significant re-structure of the groups which support the more high level strategic Board. During late 2016 and early 2017, the strategic groups had decided to combine a number of work streams across both adults and children, and in some cases to include the regional Violence Against Women, Domestic Abuse and Sexual Violence (VAWDASV) to ensure good communication across all of the strategic safeguarding regional partnership structure. The exception to this was our Quality Assurance Groups which still relate to both Adults and Children separately.

This has meant that the membership of the groups has been reviewed and revised and the terms of reference updated. It has, in some cases, given opportunities for new chairing and vice-chairing arrangements, but it has also meant that the groups themselves have needed a period to combine and consolidate business.

Each sub group now has a work plan which links directly to the annual strategic plan and we are able to regularly report progress through the Business Planning group to the Boards. This gives us a robust governance framework, and an ability to respond and support work streams to mitigate risk. Each group has continued to use the methodology of working with a number of multi-agency task and finish groups, to achieve its stated outcomes. This has proven successful as a wider, but more relevant group of practitioners, are involved in the work of the Boards. This enhances two way communications between front line staff and those that operate at a more strategic level.

We have continued our core business to review and revise regional guidance, much of which has been changed to cover both adult and children safeguarding and be up to date with changing legislation. We have begun work on a quality assurance framework which will give board members a 'snapshot' of safeguarding across the region. This has been in development for some time and has been shared with Board members to ensure they are involved and informed of the process. It includes a Section 135 Audit tool which will ensure that Boards are assured that constituent agencies have robust safeguarding arrangements in place.

We continue to develop, deliver and commission a comprehensive training programme that raises awareness of safeguarding and adds value to agencies own training in respect of safeguarding. We continue to work with representatives from Gwent Citizen Panel to encourage participation at all levels. We have used existing local and regional forums to seek the views of children and young people and survivors of abuse on a number of topics. In conjunction with the Office of the Police and Crime Commissioner, we have project managed a multi- agency professionals group who produced a number of digital media clips to be used in our training packages and for general awareness raising.

Our Case Review Group has worked with all five Public Service Boards in the region to take responsibility for recommendations on whether to undertake Domestic Homicide Reviews, alongside the recommendations they already make to respective Board chairs in relation to Child and Adult Practice Reviews. We continue to undertake both adult and child practice reviews. Work to complete Multi Agency Professional Forums, where learning for practitioner groups is identified, is now undertaken using a variety

of different methods. Feedback on the themes and lessons learned also uses a variety of different methods including workshops, briefings and web-based information.

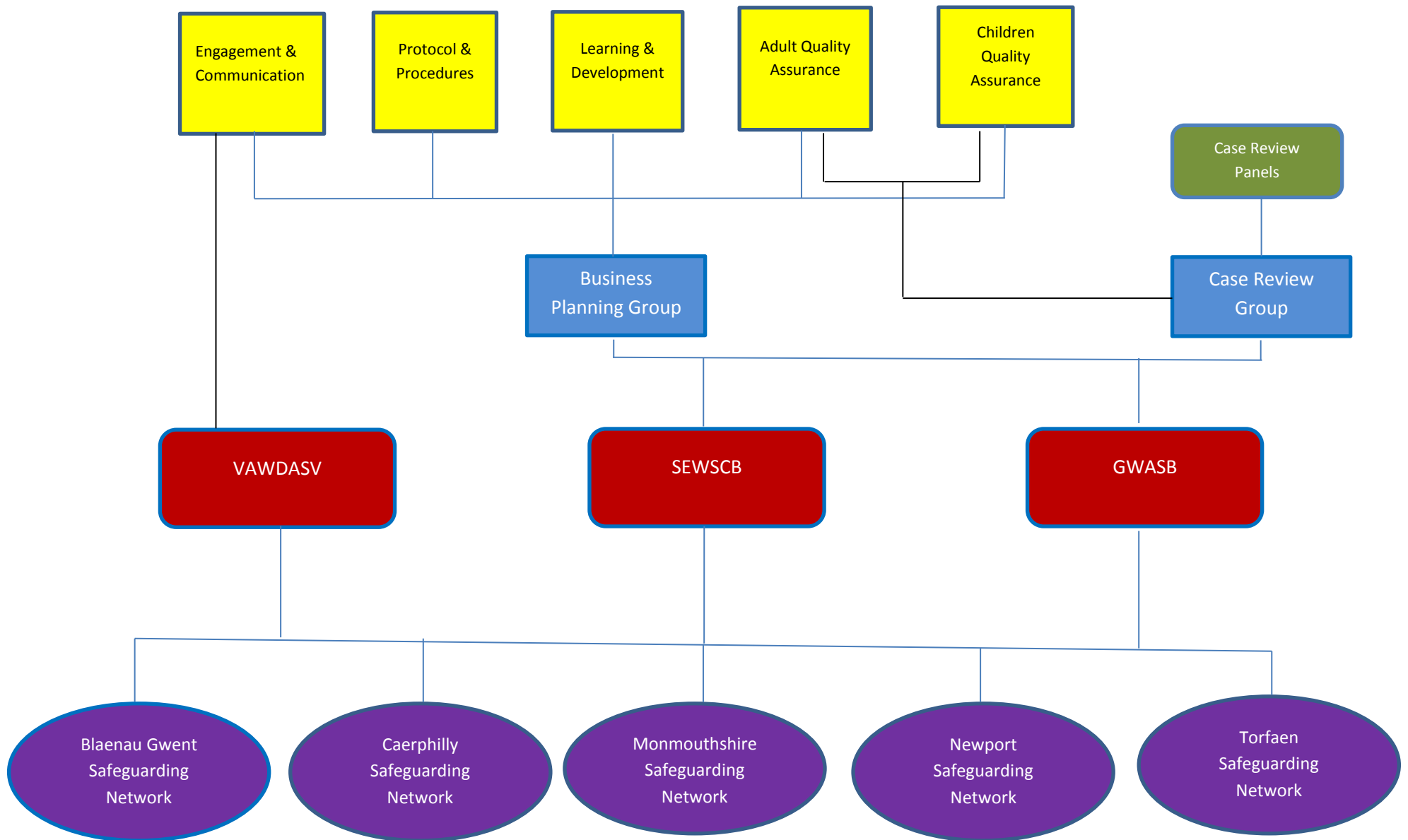
Our Business Planning Group, as well as serving as a conduit between sub groups and the strategic board, has assumed a managerial responsibility for the regional roll out of the Multi Agency Sexual Exploitation (MASE) meetings, which provide a framework for managing high level exploitation cases.

We have continued to work across the whole safeguarding spectrum and pushed ahead with our innovative project to streamline review processes for families. We have worked closely with colleagues from all disciplines to pilot Home Office led Domestic Homicide Reviews and use a hybrid format which incorporates the adult practice review guidance, to attempt to make the reviews more relevant and timely. This project, which is still in progress, also offers an independent evaluation provided by academics from Cardiff University.

The Board has also been actively involved, through individual members and regional forums, in the scrutiny and production of the regional VAWDASV strategy document.

We have also made links with the Gwent Regional Partnership Board through their provider forum which has enabled us to begin a project with advocacy providers DEWIS and National Youth Advocacy Service (NYAS) and service users to promote the use of advocacy in adult services.

Regional Strategic Safeguarding Structure



HOW WE HAVE IMPLEMENTED OUR ANNUAL PLANS

Both of the Gwent Safeguarding Boards have strategic priorities which set the direction of work that is undertaken each year.

These priorities are:

SEWSCB

- Reducing the effects of Compromised Parenting on children's well-being specifically relating to *neglect and emotional abuse*.

We have begun work on reviewing our neglect practice guidance following our neglect audit. As we began this work we found that we needed to include adults in this piece of work. This has meant that we have a larger group of practitioners involved in developing an overarching neglect protocol which will be accompanied by practice guidance for use by practitioners in Children and Adults' services.

We have used our Local Safeguarding Network Practitioner Forum events to build links with our VAWDASV services and raise awareness of the effects of Domestic Abuse on children and the links to emotional abuse. We have also revised our generic training programmes to make the links with compromised parenting and emotional abuse.

- Improving our work with adolescents who exhibit risky behaviour specifically relating to *Child Sexual Exploitation (CSE) and on-line risky behaviours*.

We have worked closely with our Gwent Police colleagues as they lead the response to CSE in the region. We have promoted the use of MASE meetings as a good multi agency response to all of the actions specified in our plan. These meetings are now facilitated across the whole region and the Aneurin Bevan University Health Board has provided extensive resources to ensure that a true multi agency response is in place to deal with this concern across the region.

We have developed a training course which deals with keeping young people safe on-line and this is now facilitated on a monthly basis. We have had excellent feedback from practitioners about their increased levels of confidence in dealing with this kind of risky behaviour. We have also worked with our colleagues in primary mental health services to facilitate a course on dealing with suicide and self-harm which is equally popular and well evaluated. This also deals with online risky behaviours in relation to suicidal ideation and self-harming behaviour.

GwASB

- Targeting Interventions towards adults who are at risk of specific types of abuse specifically relating to *Neglect and Financial Abuse*

We have undertaken work into the incidence of neglect as a percentage of safeguarding referrals which has given us a baseline of the prevalence of neglect in adult safeguarding. We have also begun work to produce an overarching protocol and dedicated practice guidance as detailed for children above. This is a good example of how the strategic direction set by the Boards can influence the work undertaken at front line service level.

We have worked with our colleagues in Gwent Police to measure the incidence of financial abuse in our adults at risk population. This has influenced how we raise awareness of this matter. As a result

of this work we ensured that financial abuse was a major component of our Local Safeguarding Network Practitioner Forum Events and ensuring we reached a wide range of social care practitioners.

- Improving the Quality of Care specifically relating to *managing pressure damage* and *promoting adult advocacy*.

We have begun work on agreeing a working protocol and practice guidance to supplement the existing guidance used by the Aneurin Bevan University Health Board (ABUHB) to manage pressure damage. We anticipate that this work will be completed in the next financial year and will provide a consistent approach which ensures the process maintains primacy for ABUHB in the agreed pathway.

Through our connections with the Regional Partnership Board we developed an opportunity to include approved advocacy providers, service users along with practitioners to produce a suite of resources to raise awareness of the benefits of advocacy services and the responsibilities of statutory services in respect of an 'active offer' of advocacy. This work is well underway and will be completed in the new financial year. We have also reviewed and revised our generic adult safeguarding training to include more information about the use and benefits of advocacy services.

There are also joint priorities which cover both Boards:

- Ensuring the continued effectiveness of safeguarding practice during the implementation and transition into the Social services and well-being (Wales) Act 2014.

We have made links with the Gwent 'transformation team' who were responsible for the smooth implementation of the Social Services and Well-being Act. We have a number of Board members who represent the safeguarding boards on the partnership boards and the associated forums. We ensure that our strategic priorities are taken into account when the Gwent needs assessments were compiled and the area plan was formulated.

We have made good links with our National Independent Safeguarding Board (NISB) representative who attends Board meetings and provides regular updates on the work of the NISB.

We have been unable to progress our action in relation to up to date procedures as to date the work on the national safeguarding procedures has yet to be concluded. Along with other regions we are continuing to use the All Wales Child Protection Procedures and the All Wales Interim Protection of Vulnerable Adult Procedures.

- Maintaining Effective Regional Safeguarding Boards.

We have worked to raise the profile of both Safeguarding Boards in Gwent through our Local Safeguarding Networks, both by our meetings in the five local authority areas and our Network events. These bring together a wide range of practitioners and volunteers and highlight a broad range of safeguarding issues across children, adults and VAWDASV services. These have proven to be very well patronised and popular as they give the opportunity for people to learn about safeguarding in services which they may not normally come into contact with.

We have progressed work in relation to our section 135 audit process and this is linked with the introduction of our Quality Assurance Framework, which has taken a longer than intended. It is now at a point that we are about to pilot the information and data collection process in advance of presenting the information to both Boards.

We have been unable to progress a formal self- assessment for the Boards due to the delay in production of an up to date toolkit. It is acknowledged that this work is now well underway and we plan to pilot / assess the new version in our planned joint Board development session later in 2018.

WHO WE HAVE WORKED WITH TO SAFEGUARD PEOPLE IN GWENT

We have worked collaboratively with a range of agencies, other partnerships and forums to enable us to deliver our objectives to date. These include:

- Gwent Police;
- Aneurin Bevan University Health Board;
- National Probation Service;
- Gwent Community Rehabilitation Company;
- Public Health Wales;
- Prison Services;
- Fire and Rescue Service;
- Gwent Voluntary Association;
- Torfaen Voluntary Alliance;
- Gwent Drug and Alcohol Services;
- Office of the Gwent Police and Crime Commissioner;
- Gwent Registered Social Landlords.

From our Five Local Authority Areas – Blaenau Gwent, Caerphilly, Monmouthshire, Newport and Torfaen

- Education;
- Children's Services;
- Adult services;
- Statutory Housing Providers;
- Youth Offending Services.

We have strong working links with other Regional and National partnerships:

- VAWDASV;
- Regional Partnership Board;
- NISB;
- All Other Welsh Safeguarding Children and Adult Boards.

Finally and certainly not least, we have worked with:

- Gwent Citizens Panel;
- Children and Young People;
- Parents and Carers;
- Survivors.

FORMAL REQUESTS FOR INFORMATION

During the year 2017 to 2018 neither of the Gwent safeguarding Boards made any formal requests for information from qualifying persons. Similarly neither of the Boards received any formal requests for information from agencies or qualifying bodies.

ACHIEVEMENTS OF THE SAFEGUARDING BOARDS IN THE PAST YEAR

The Boards have set the direction for a broad range of safeguarding work and innovative ways of working in the last year. This has included:

- Reviewing and revising the composition, Terms of Reference and ways of working of our sub groups. This has resulted in a more dynamic and streamlined sub structure with less duplication. It has also provided practitioners the opportunity to share experiences and ideas across adult, children and VAWDASV agendas.
- We have fully translated the SEWSCB and GwASB websites. This means we are compliant with the Welsh Language Measure.
- Chairs and Vice Chairs have worked more closely with the National Independent Safeguarding Board through the leadership summit and scheduled meetings at Welsh Government.
- During National Safeguarding week our region led on the Domestic Abuse theme. We collaboratively worked with colleagues from the regional VAWDASV partnership to deliver a multi-agency conference and a series of local events to raise awareness and promote the benefits of a multi-agency response.
- We have worked with partners to produce the Boards strategic plan, and in turn this has ensured we have been involved in the production of the Gwent area plan and VAWDASV regional strategy.
- We have disseminated the learning from one completed serious case review and three completed child practice reviews directly to practitioners through a number of locally held workshops.
- We have managed a project funded by the Office of the Gwent Police and Crime Commissioner to produce a number of media clips to raise general awareness of safeguarding and enhance our Board approved training packages.
- We have worked with Gwent Citizens Panel to co-opt a member onto our Engagement and Communication group.
- We have worked on an innovative project to streamline the Domestic Homicide Process across Gwent. We have involved many partners and are beginning to progress this work with the bonus of a built in evaluation of this project. The benefit will be a less onerous process for families and easier and more timely learning for practitioners.
- Our Local Safeguarding Network meetings and six monthly practitioner forum events have proved a very successful way of sharing information across all safeguarding agendas. Their evaluation has shown that they provide excellent networking and knowledge gaining opportunities. They are now fully embedded into core Board business.
- The introduction of Hot Topics at both Board and Local Network level has enabled members to raise safeguarding concerns at a variety of levels.
- We have begun work on an ambitious project to develop a joint Quality Assurance Framework which covers the work of both Boards.
- We have continued to deliver core business for both Boards' including undertaking reviews, delivering our Board approved training packages, working with our colleagues across Wales, and being advised by front line practitioners and service users and families.

BOARD MEMBER AND AGENCY CONTRIBUTIONS

Along with the excellent support and consistent participation from members at the Strategic Board level, we have been fortunate to use resources from all constituent Board agencies and many other partners to support the work of the Boards throughout the past year. The participation of Board members has increased with the introduction of ‘Hot Topics’ as a standing agenda item. Board members are encouraged to share safeguarding concerns and themes at Board level, to ensure the strategic Board is sighted on local issues, and offer support and advice as necessary.

In addition we rely on agencies to provide individuals to work with the Gwent Safeguarding Business Unit and to provide Chairs and Vice-Chairs for our groups.

Chairing and Vice-Chairing arrangements for our groups is sourced from:

<p>SEWSCB Blaenau Gwent Social Services Caerphilly Children’s Services</p>	<p>GwASB Torfaen Social Services Aneurin Bevan University Health Board</p>
<p>CASE REVIEW GROUP Gwent Police National Probation Service</p>	<p>BUSINESS PLANNING GROUP Newport Safeguarding Team Torfaen Safeguarding Team</p>
<p>QUALITY ASSURANCE CHILDREN GROUP Monmouthshire Children’s Services</p>	<p>QUALITY ASSURANCE ADULTS GROUP Aneurin Bevan University Health Board</p>
<p>ENGAGEMENT AND COMMUNICATION Newport Adult Services Registered Social Landlord</p>	<p>LEARNING AND DEVELOPMENT Torfaen Workforce Development Blaenau Gwent Adult Safeguarding Team</p>
<p>PROTOCOL AND PROCEDURES Monmouthshire Safeguarding Team Torfaen Children’s Services</p>	

We have also used our partner resources to constitute a ‘delivery group’ to develop, review and facilitate our Boards’ generic training programme. We have been able to use these resources to ‘do more with less’ in respect of the amount of training that we are able to deliver to practitioners. Partners give these resources as a payment in kind to the Boards which, in turn, enables us to use our budget to finance venues only. All partner agencies of the Board have contributed to this resource, which we count as a major contribution to Board business.

We also rely on the resources provided by agencies and partners to Chair and provide reviewers for both child and adult practice reviews and Multi Agency Professional Forums (MAPF). We have been fortunate to utilise staff from Public Health Wales, Gwent Police, Aneurin Bevan University Health Board Safeguarding Team, Torfaen Safeguarding Team, Newport Safeguarding Team, Monmouthshire Safeguarding Team, Monmouthshire and Torfaen YOS, Caerphilly Safeguarding Team and Children’s Services in the review process that have begun or are in planning for the forthcoming year.

We are also planning to progress with a pilot review which combines Domestic Homicide reviews with Adult Practice Reviews and have, during this planning process, worked with colleagues from Aneurin Bevan University Health Board, VAWDASV, Newport safeguarding, National Probation service, Gwent Police,

Welsh Government, Home Office, Cardiff University, Advocacy After Fatal Domestic Abuse (AAFDA) and Monmouthshire Public Services Board.

We rely heavily on the help and support of the Safeguarding Lead Managers from each of the five Local Authority areas across Gwent as they each Chair their own Local Safeguarding Network (LSN) Meetings and head up their six monthly LSN Practitioner Forum events.

Across Gwent, the way that the Boards and their sub groups function is a real example of multi-agency working at its best. Without the commitment and contribution from Board members, agencies and partners the work of the Board at its current level would not be possible.

USE OF RESOURCES

The Board is funded by contributions from statutory partner agencies who have agreed the funding formula as set out in the Welsh Government document 'Working Together to Safeguard People Volume 1 – Introduction and Overview ', the guidance which accompanies the Social Services and Well-being (Wales) Act 2014.

This funding resources a regional safeguarding business unit consisting of a Business Manager, Development Officers and Administrative Support staff who provide support for both Children and Adult Boards, the sub groups and Local Safeguarding Networks.

The Boards also provide an extensive multi agency regional training programme. This consists of a range of generic safeguarding courses which enable free access for practitioners and volunteers across the region. They are designed to complement and add value to the training provided by workforce development teams in the region.

The specific costs for this support are set out below. These costs have remained static for the past three years.

Total costs	£355,000
Staff costs	£289,000
Day to day running costs	£26,000
Child Practice Reviews	£4,000
Adult Practice Reviews	£4,000
Training Programmes	£22,000
Engagement / Websites & Publicity / Professional events (Including National Safeguarding Week)	£10, 000

It is acknowledged resources used to support the work of the Regional Safeguarding Board are not confined or restricted to financial contributions from statutory partner agencies. The Regional Safeguarding Board Chairs, Executive Board Members, Sub Group Chairs and members provide a significant amount of the time to support the board and its work. This is often in addition to their identified professional roles and day to day responsibilities. The variable and diverse nature of the Boards work makes this difficult to report on within a quantifiable and measurable resource context and is not always obviously visible to other professionals and agencies. The process, management and publication of child and adult practice reviews, as well as the development of regional protocols and policies are just some examples of safeguarding board work and projects that require high levels of professional input, knowledge and expertise.

IDENTIFIED SAFEGUARDING THEMES

The Boards in Gwent use a number of methods of identifying safeguarding themes. These include audits, reviews, current practice and emerging national and regional strategic concerns. When identified, the Boards use these themes to inform future work and set the direction of the Boards' strategic priorities going forward.

An example of this is the work undertaken by GwASB in response to the publication of the 'In search of accountability' report. Our Plans reflected this by naming the 'Quality of Care' as one of strategic priorities. Likewise, SEWSCB used the research completed with children and young people about staying safe to prioritise keeping Young people safe on line as one of their strategic priorities.

Some of the other safeguarding themes that we have identified over this year have been in respect of falls in our older 'at risk' population. We have worked to align reporting structures and pathways with existing Health Board protocols.

Some themes that have emerged from child practice reviews have been around working with uncooperative families and we have reviewed and strengthened guidance to help practitioners working directly with families.

We have also recognised information sharing as a recurring theme and as a result have reviewed our use of multi-agency chronologies and made the accompanying guidance more robust.

We understand that mental health issues in young people are of concern and two of our most recent reviews have dealt with this issue. We have worked with our colleagues in primary mental health services to develop a training course for professionals, to better equip them to deal with these concerns.

We have also identified that there are strong links between domestic abuse and child emotional abuse and neglect, as a result we have worked to look at the themes and learning from Domestic Homicide Reviews in our region and ensure that learning from these reviews is shared alongside that from our child and adult practice reviews.

PARTICIPATION AND INVOLVING CITIZENS IN THE WORK OF THE SAFEGUARDING BOARDS

We understand the importance of working with citizens, service users, children and young people, parents, carers and survivors to set the strategic direction and influence the work of our Boards. To facilitate this process we have made links through our engagement and communication group to a number of existing forums and groups. This enables us to utilise these groups for specific pieces of work as necessary. We can then ensure that we involve the most relevant group of individuals with each project we undertake. An example of this work was to speak with a local parenting network group about the development of the content of the website pages for parents and carers. Some further examples include:

- The interactive Child Sexual Exploitation Drama production that was rolled out in all schools for a specific year group;
- The website development task and finish group which has consulted with professionals and volunteers at various levels about content;
- Making links with the regional 'provider forum' to raise awareness of safeguarding;
- Using information from Gwent Drug and Alcohol Service to inform the production of our Quality Assurance Framework;
- Making strong links with the Gwent Registered Social Landlords and talking to young people in each locality through the 'Go Girls' and 'Brothers' interactive drama production focussing on CSE;
- Working with a group of survivors through collaboration with VAWDASV;
- Project managing a group of service users to work with advocacy providers to raise awareness of changes in legislation in relation to an 'active offer' of advocacy services;
- Involving families as a matter of course in our review processes. This has ensured that families feel involved and can influence the production of recommendations as part of the review process;
- We have a member of the Gwent Citizen panel that attends all of our engagement and communication groups. This has proven successful in providing a good connection to the panel and a number of other forums across Gwent.

USE OF ADULT PROTECTION AND SUPPORT ORDERS

No Adult Support and Protection Orders were used by GwASB during the year.

LEARNING AND TRAINING

We have a long history in the Gwent region of providing a comprehensive package of awareness raising training for professionals and volunteers. This training is provided to enhance that which is already provided by individual agencies. We use a variety of methods including commissioning for some more specialist subjects, but this year we have made great improvements in the number of courses facilitated through our delivery group approach. We have been able to increase the number of places available and better quality assure and evaluate the courses that are being delivered.

This year we have begun work to align the delivery of courses for adult safeguarding to those provided for children and young people. Whilst this is still a work in progress, we have reviewed and revised a number of modules to ensure they are up to date with current legislation and begun to pilot these. We also plan to develop a combined Introduction to safeguarding course which will cover both children and adult in the forthcoming year. The following is a summary of the training provided in the past year:

Course Title	No of Sessions	No of Attendees
Introduction to Safeguarding – Raising Awareness of Abuse and Neglect in Children	13	254
Safeguarding Children – Recognition, Referral and the Child Protection Process	12	257
Handling Issues of Suicide and Self Harm in Children and Young People	2	36
Working with Neglect – Maintaining the Focus on the Child	2	36
Safeguarding Children in the use of Social Media, Internet, Gaming and Mobile Devices	9	170
Safeguarding Vulnerable Groups and Young People from the risk of Gambling Related Harm	4	45
Hidden Sentence Training	3	38
Managing Young People Engaged in Harmful Sexual Behaviour	5	95
New Psychoactive Substance Awareness Training	3	45
SERAF Training	7	112
Talking To....Substance Misuse Awareness Training	5	60
Total	65	1148

GUIDANCE, ADVICE AND WORKING WITH THE NATIONAL SAFEGUARDING BOARD

We have worked closely with the Welsh Government over the past year and representatives from the Gwent Boards have participated fully in national events. This has included the project Board for the production of the All Wales Safeguarding Procedures, National Independent Safeguarding Board Leadership summit meetings and individual consultation meetings. Our region participates fully in the All Wales Safeguarding Business Managers network events and meetings.

Our Boards receive regular updates from the designated link member of the NISB, this is a standing agenda item for both Boards. We understand that there was some concern on behalf of the NISB about the production of previous Annual Plans and Reports and as a consequence we have revised the format of these to ensure a consistent All Wales approach.

We have been advised by colleagues from other Regional Board areas that reviews have been published which have influenced the national agenda in respect of certain areas of practice such as Elective Home Education and as a result we have reviewed our response to the production of such reviews. In future, we plan to highlight this national learning at a local level and disseminate this learning to practitioners via our well established networks.

We fully understand the importance of collaboration with partners across Gwent and have provided guidance to local Public Service Boards about the review process used by Boards. In addition to this, our strategic priorities have informed the production of plans in each Local Authority area.

OTHER MATTERS RELEVANT TO OUR WORK

In reviewing our work over the past year, a number of ideas and suggestions for how we progress with work in the forthcoming year have emerged.

In children safeguarding, we understand that we need to broaden our scope from raising awareness of and managing CSE to other forms of exploitation. This has been highlighted by a national awareness of modern slavery, trafficking and county lines. Our Plan for the forthcoming year includes priorities which deal with these concerns. Likewise in adult safeguarding, we have begun work on financial abuse which has highlighted a concern in relation to gambling and this has given us links to safeguarding which stretch across both agendas, as a result, we plan to work in a more holistic way to tackle these issues.

We are looking to use case studies as another way to provide learning for practitioners and plan to pilot this approach in our Quality Assurance groups in the next year.

We are also mindful of being flexible in our ability to both predict and respond to emerging national and regional trends. As a result of this, our planned Board development sessions are attempting to look at the range of emerging national priorities and will use these to influence our strategic direction going forward.